

# Conseils d'impression

## **Si vous avez la boîte de supports**

Vous avez tous les supports nécessaires à l'entraînement GS ou CP, vous n'avez rien à imprimer.

## **Avant de commencer**

### **Vérifier le format d'impression**

Imprimer une première feuille A4 et vérifier que votre imprimante ne tronque pas le document sur les bords. Si c'est le cas, réduisez le format d'impression à 97 % au moins.

### **Adapter le grammage du papier**

En fonction des possibilités de votre imprimante utilisez du papier cartonné au grammage le plus élevé. Eventuellement plastifier les supports après impression pour une plus grande pérennité.



# Impression des supports

## Impression de la totalité des supports par niveau

Le fichier TOTAL est optimisé pour imprimer facilement l'ensemble des supports de l'entraînement.

- 1/ Choisir dans le dossier correspondant au niveau souhaité (GS ou CP) le fichier TOTAL - IMPRESSION OPTIMISÉE.
- 2/ Imprimer le fichier en 1 exemplaire sur papier cartonné.
- 3/ Découper les cartes selon les pointillés. Regrouper les cartes par repères (losange 1, rond 3,...) et les entourer d'un élastique.

## Impression par exercice du niveau

Le dossier CARTES vous permet d'imprimer facilement l'ensemble des supports d'un ou de plusieurs exercices. Il est prévu en couleur et en noir/blanc. (Cf. Tableau récapitulatif des supports en page 3 pour Phono.Mi GS ou en page 4 pour Phono.Mi CP).

- 1/ Choisir dans le dossier correspondant au niveau souhaité (GS ou CP) le dossier CARTES (COULEUR ou NOIR).
- 2/ Puis ouvrir le fichier des cartes qui vous intéresse et imprimer le fichier en 1 exemplaire sur papier cartonné.
- 3/ Découper les cartes selon les pointillés et les entourer d'un élastique.

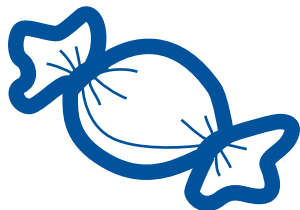
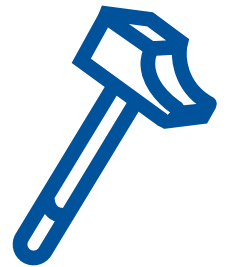
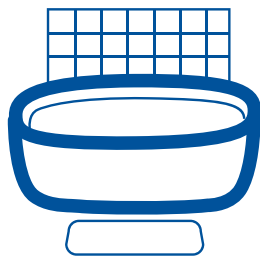
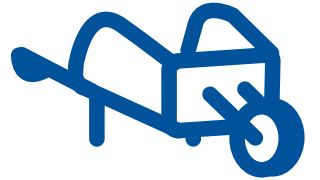
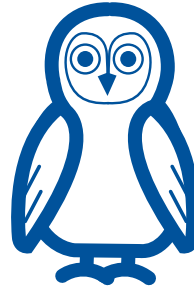
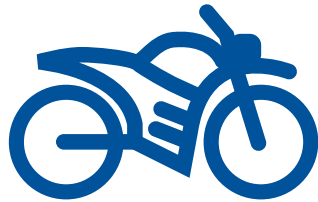
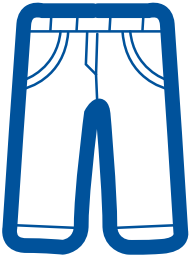
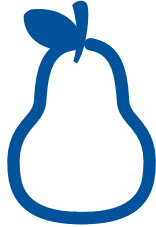
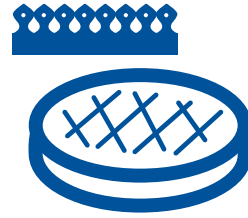


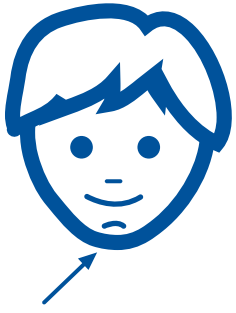
# Phono.Mi GS (Prélecteurs)

## Tableau récapitulatif des supports élèves

Séances	Cartes images	Planches loto	Cartes lettres
Jour 1	◆1 / ◆2		
Jour 2	◆1 / ◆2		
Jour 3	◆1 / ◆2		
Jour 4	◆2 / ■1-2		
Jour 5	■1-2		
Jour 6	■1-2 / ■3		
Jour 7	■1-2 / ■3		
Jour 8	■3 / ■5		
Jour 9	■3 / ■5		
Jour 10	■5		
Jour 11	■5 / ■7		
Jour 12	■5 / ■7		
Jour 13	■5 / ■7		
Jour 14	■7 / ●1-2 / jetons		
Jour 15	●1-2 / jetons	x	
Jour 16	●1-2 / jetons	x	
Jour 17	●1-2 / jetons	x	
Jour 18	●1-2 / jetons	x	
Jour 19	●1-2 / jetons / ●3	x	
Jour 20	●3		x
Jour 21	●3 / ●5		x
Jour 22	●3 / ●5		x
Jour 23	●5		x
Jour 24	●8		x
Jour 25	●8		x
Jour 26			x
Jour 27	●9		x
Jour 28	●9		x
Jour 29	●9		x
Jour 30			x
Jour 31			x
Jour 32			x



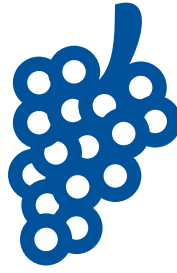




◆1



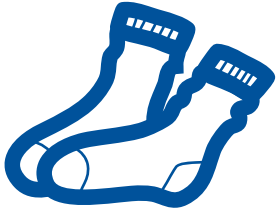
◆1



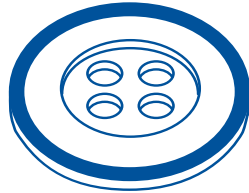
◆1



◆1



◆1



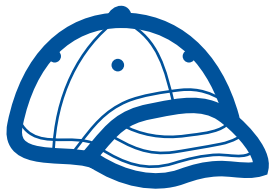
◆1



◆1



◆1



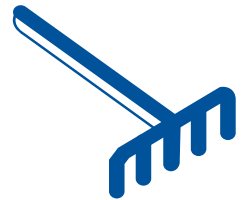
◆2



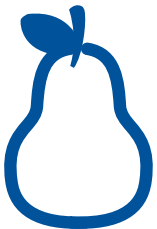
◆2



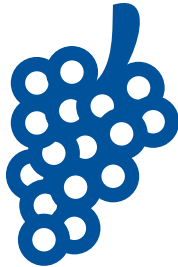
◆2



◆2



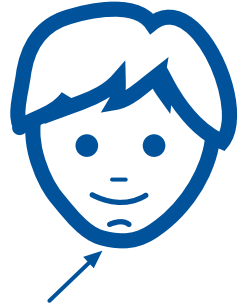
◆2



◆2



◆2



◆2



◆2



◆2



◆2



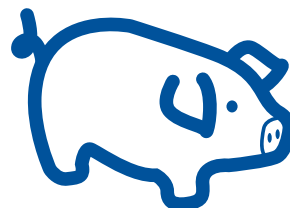
◆2



◆2



◆2

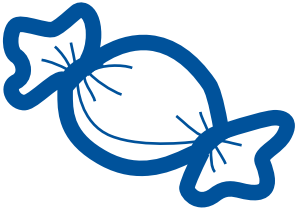


◆2



◆2

◆2



◆2



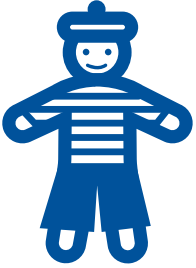
◆2



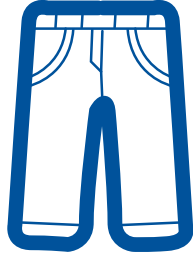
◆2



◆2



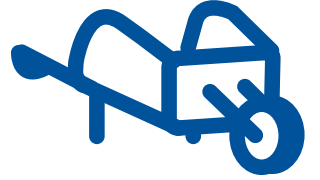
◆2



◆2



◆2



◆2



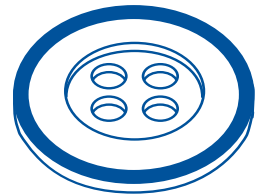
◆2



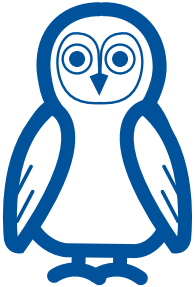
◆2



◆2



◆2



◆2



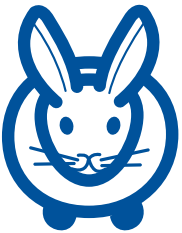
◆2



◆2



◆2



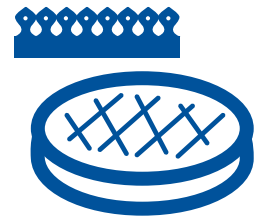
◆2



◆2



◆2



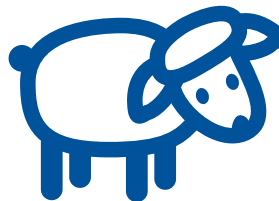
◆2



◆2



◆2



◆2



◆2



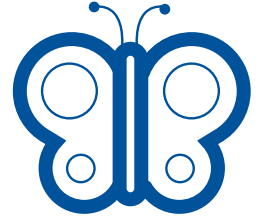
◆2



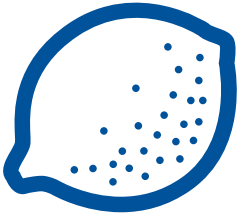
◆2



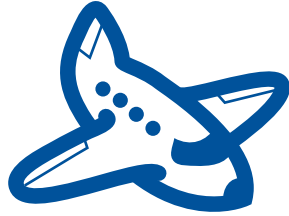
◆2



◆2



◆2



◆2



◆2



◆2



◆2



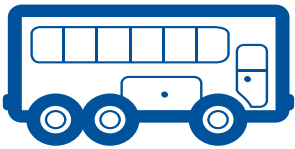
◆2



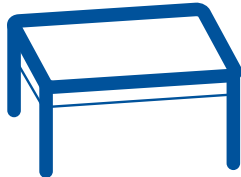
◆2



■3



■3



■3



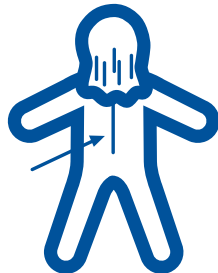
■3



■3



■3



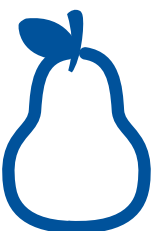
■3



■3



■3



■3



■3



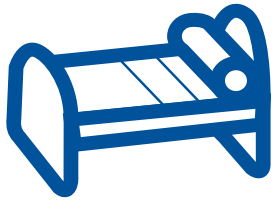
■3



■3



■3



■3



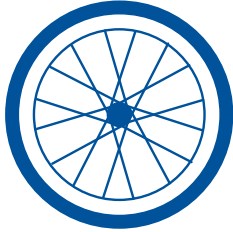
■3



■3



■3



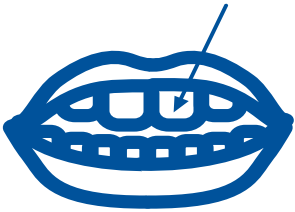
■5



■5



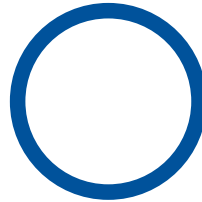
■5



■5



■5



■5



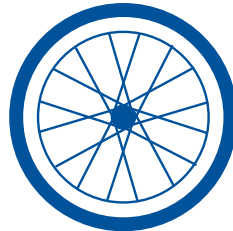
■5



■5



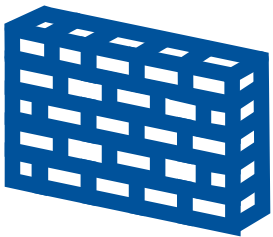
■5



■5



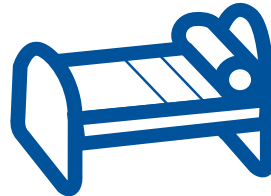
■5



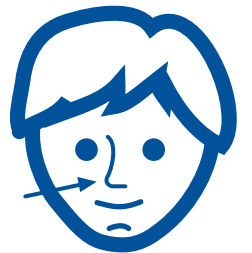
■5



■5



■5



■5



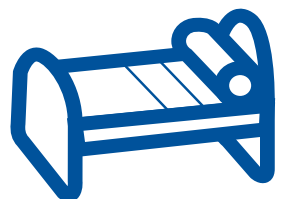
■7



■7



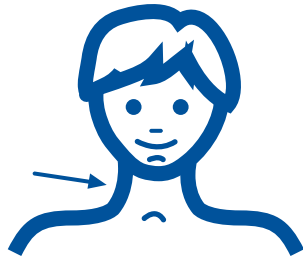
■7







■7



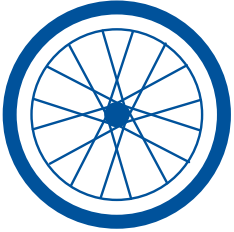
■7



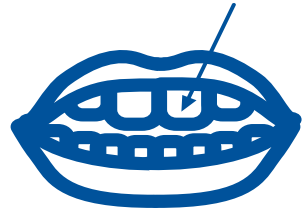
■7



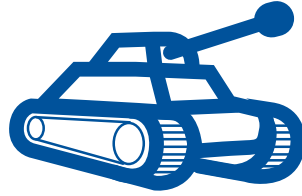
■7



■7



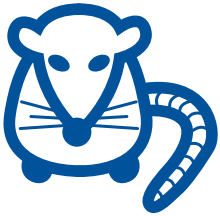
■7



■7



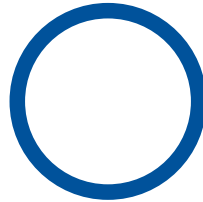
■7



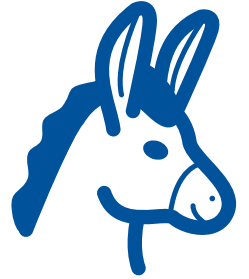
■7



■7



■7



●8



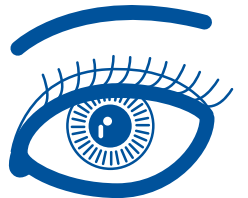
●8



●8



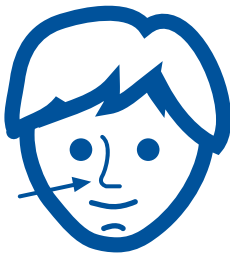
●8



●8



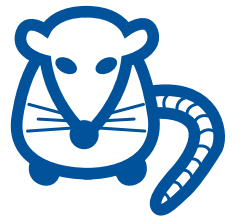
●8



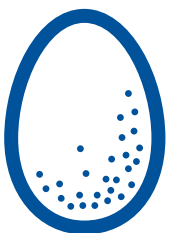
●8



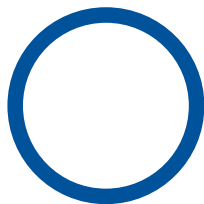
●8



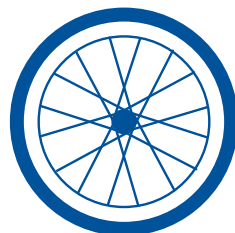
●8



●8



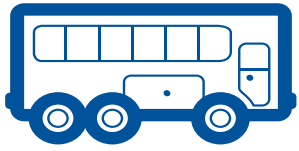
●8



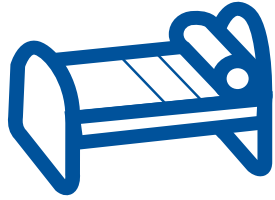
●8



●8



•8



•8



•8



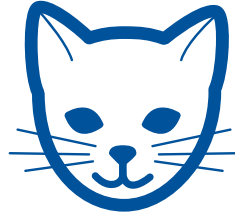
•8



•8



•8



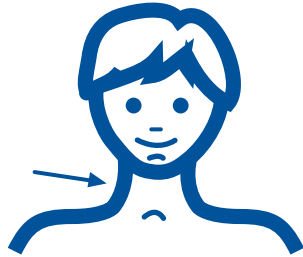
•8



•8



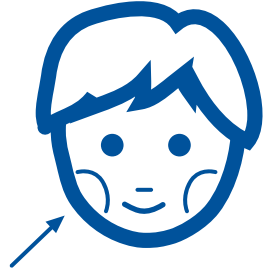
•9



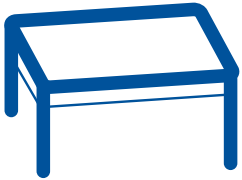
•9



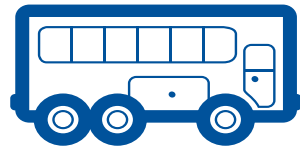
•9



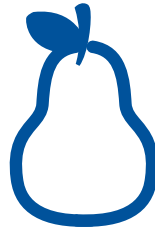
•9



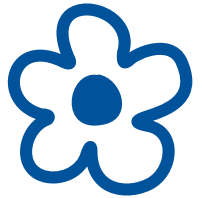
•9



•9



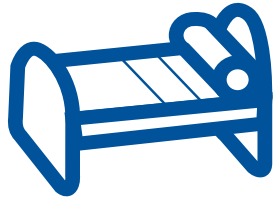
•9



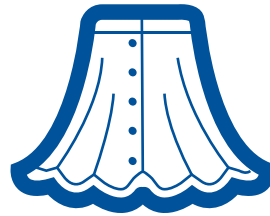
•9



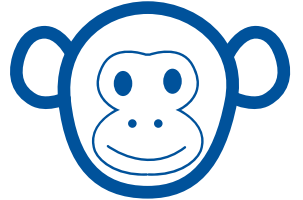
•9



•9



•9



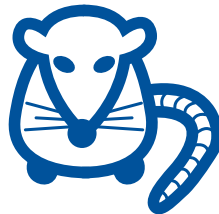
•9



•9



•9



•9

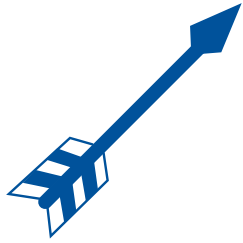


•9

●9



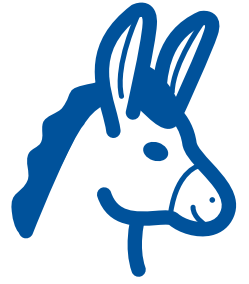
●9



●9



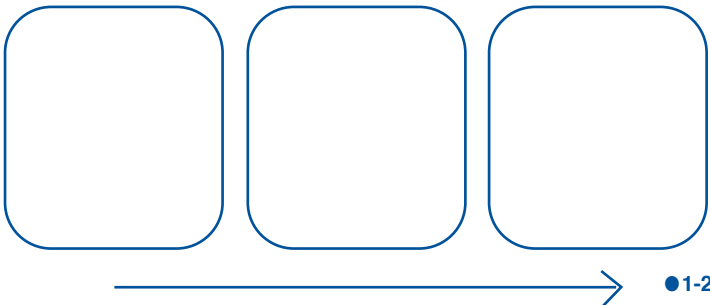
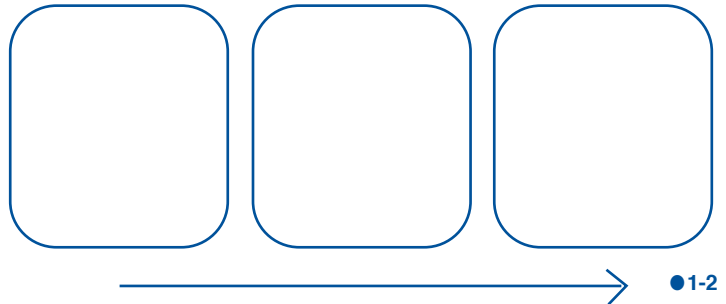
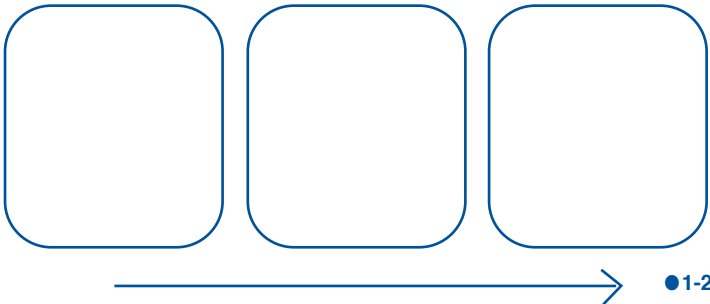
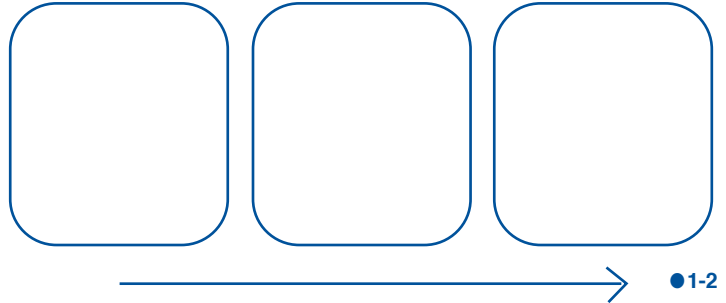
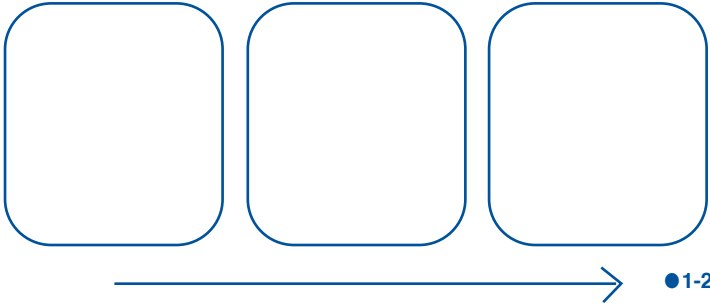
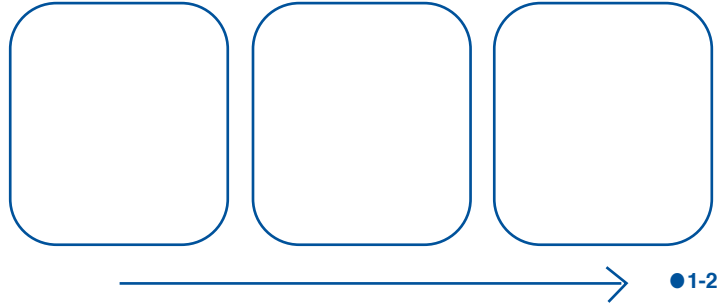
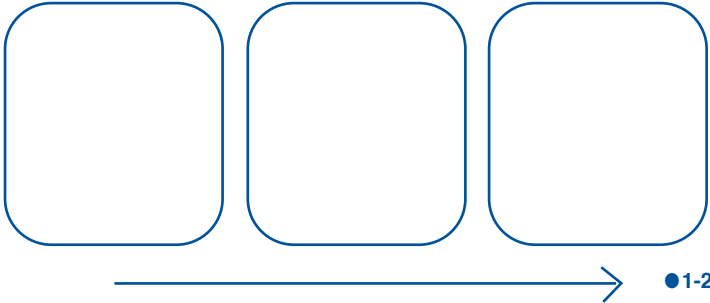
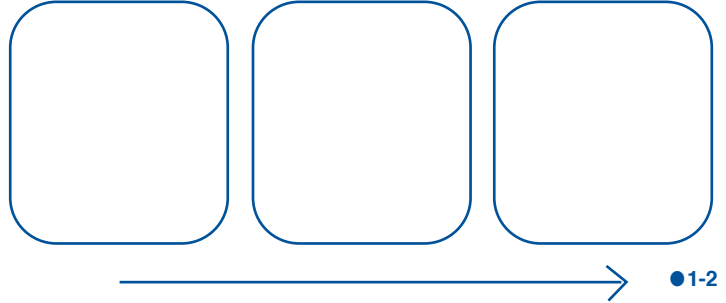
●9



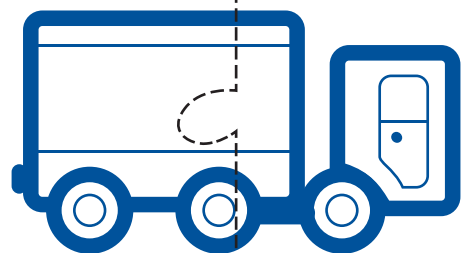
●9



●9

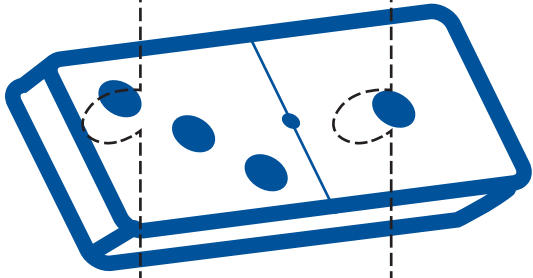


■1-2



■1-2

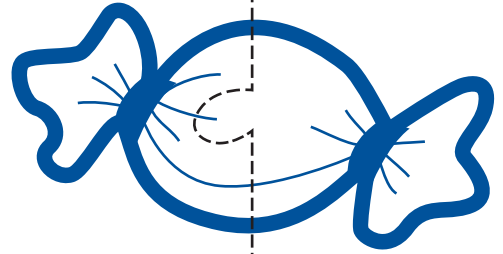
■1-2



■1-2

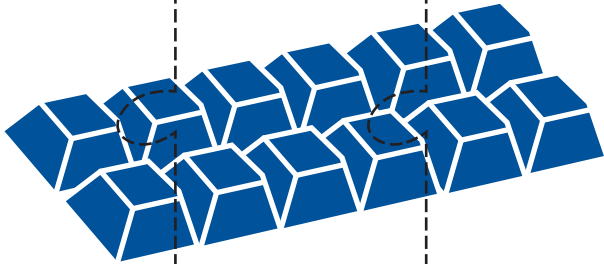
■1-2

■1-2



■1-2

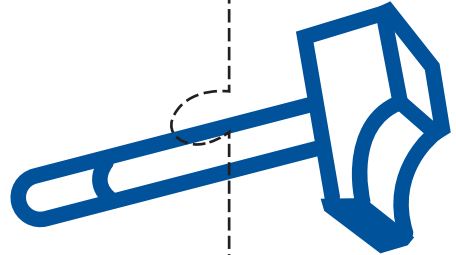
■1-2



■1-2

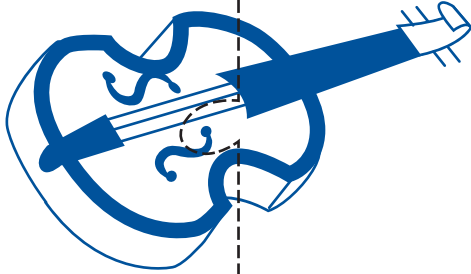
■1-2

■1-2



■1-2

■1-2



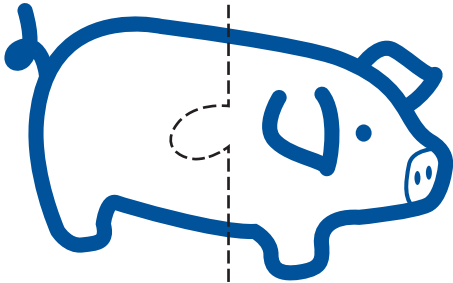
■1-2

■1-2



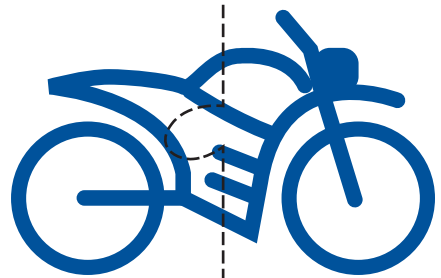
■1-2

■1-2



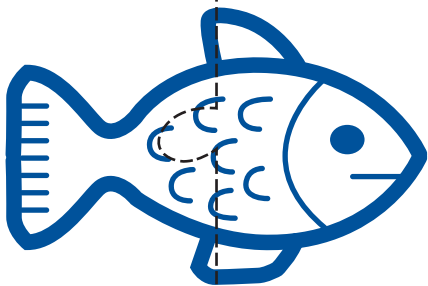
■1-2

■1-2



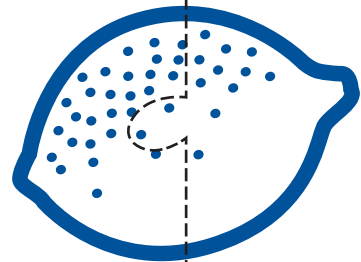
■1-2

■1-2



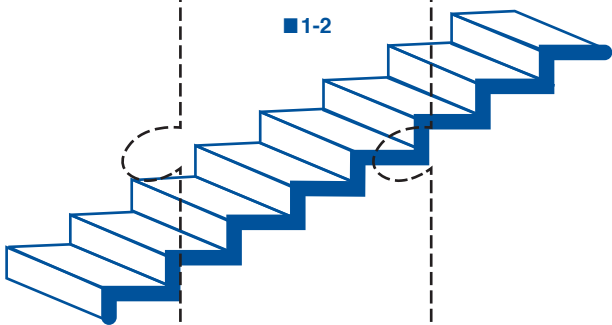
■1-2

■1-2



■1-2

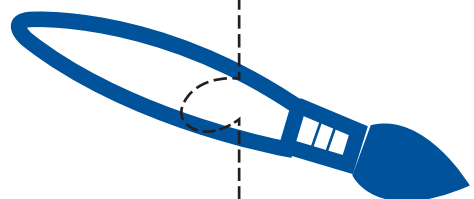
■1-2



■1-2

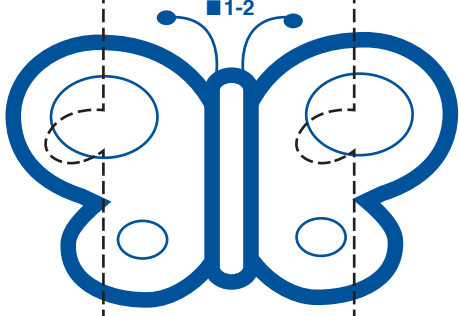
■1-2

■1-2



■1-2

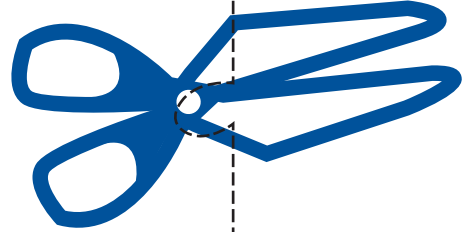
■1-2



■1-2

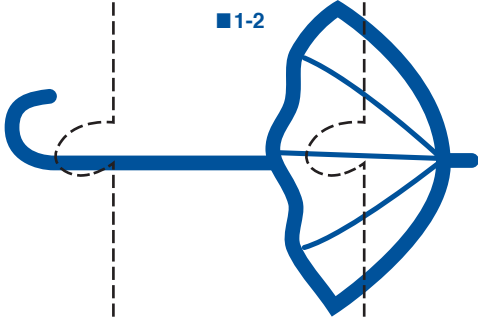
■1-2

■1-2



■1-2

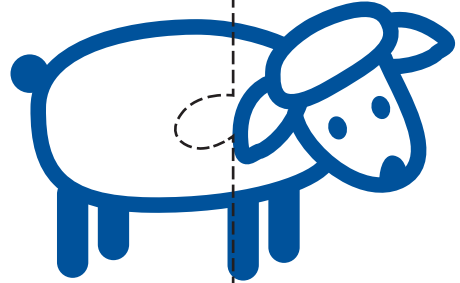
■1-2



■1-2

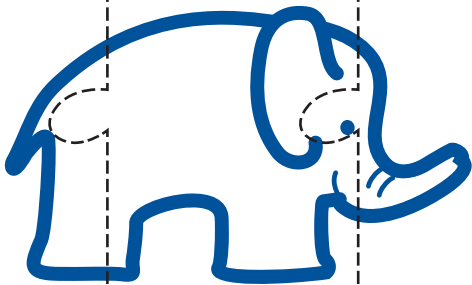
■1-2

■1-2



■1-2

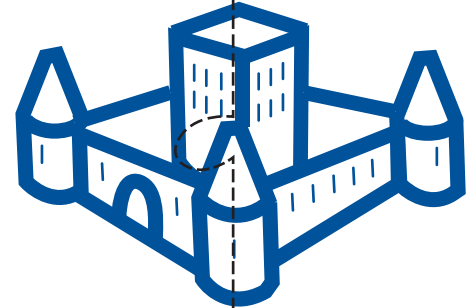
■1-2



■1-2

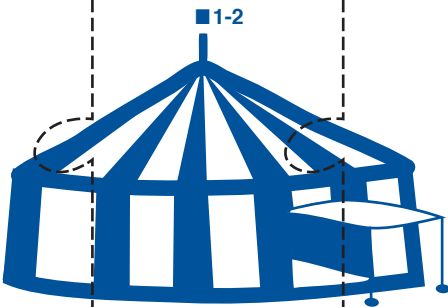
■1-2

■1-2



■1-2

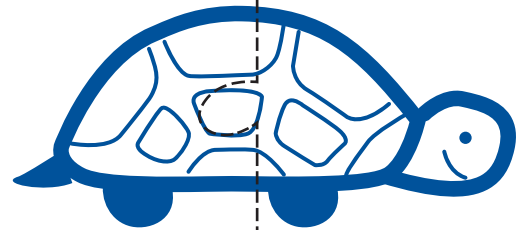
■1-2



■1-2

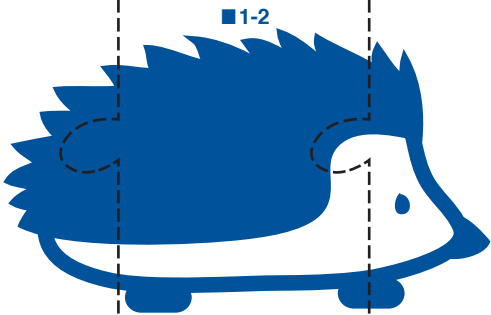
■1-2

■1-2



■1-2

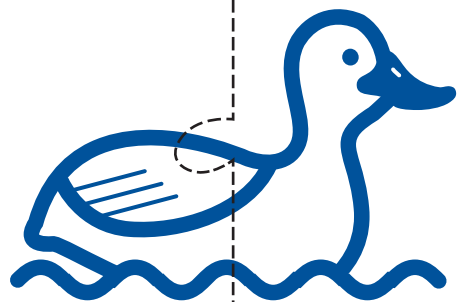
■1-2



■1-2

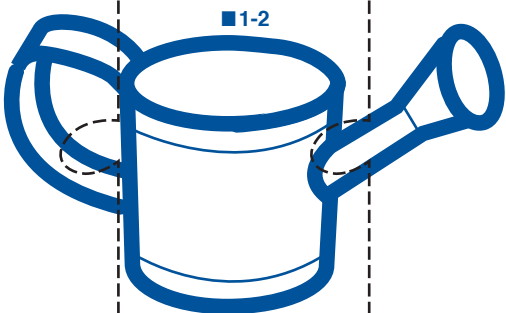
■1-2

■1-2



■1-2

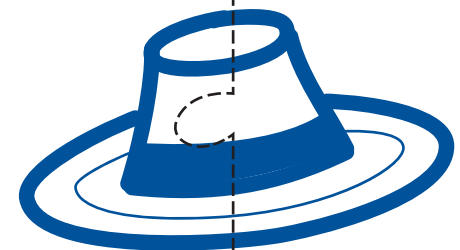
■1-2



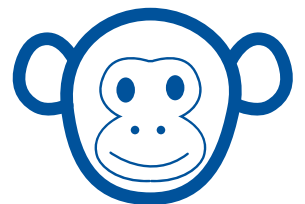
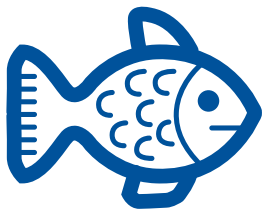
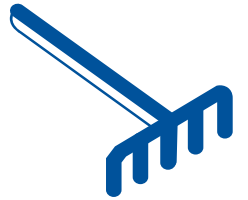
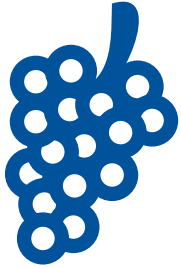
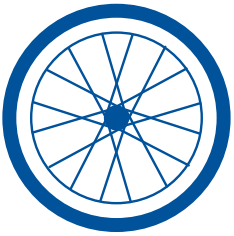
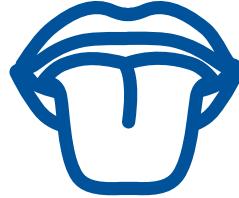
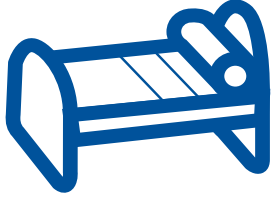
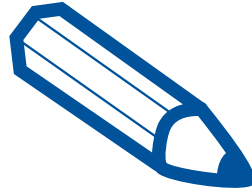
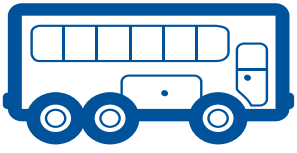
■1-2

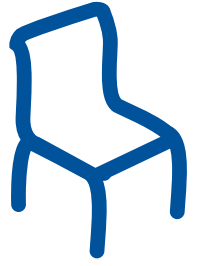
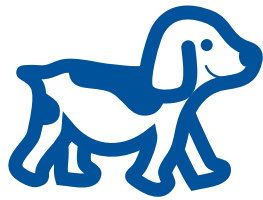
■1-2

■1-2

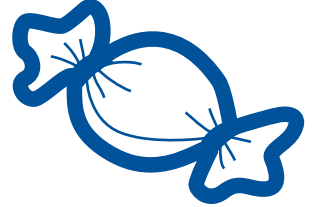


■1-2

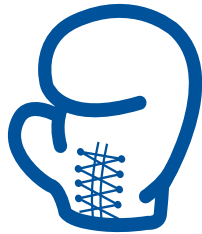




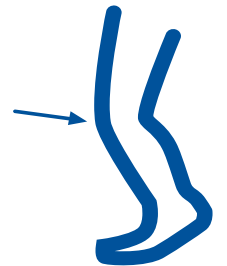
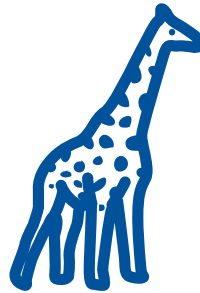
3



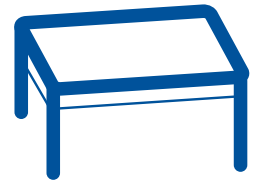
3



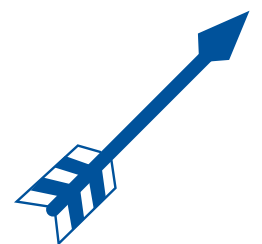
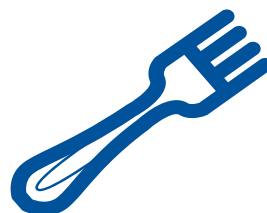
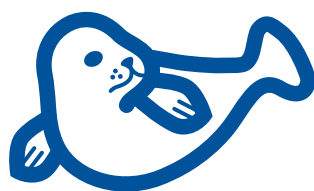
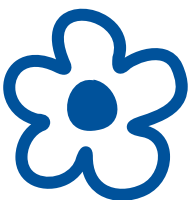
3



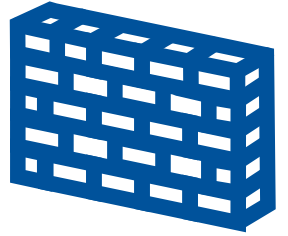
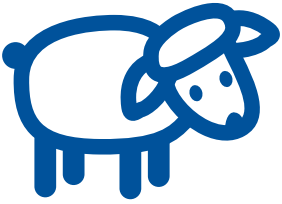
3



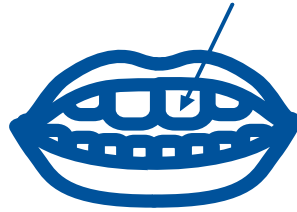
3



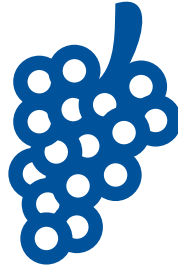
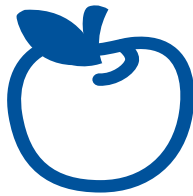
3



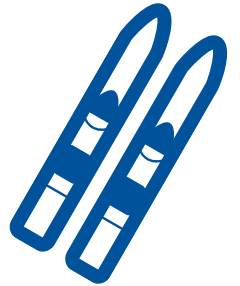
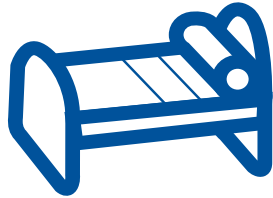
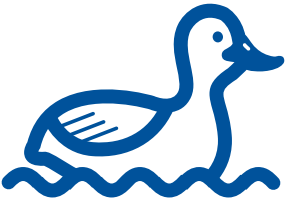
● 3



● 3



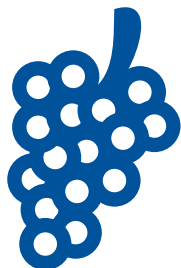
● 5



● 5

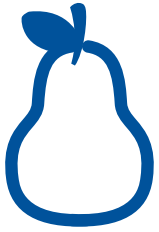


● 5

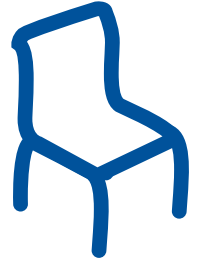
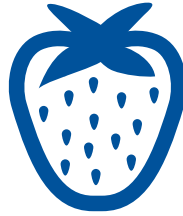


● 5

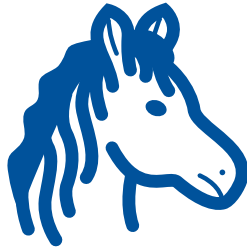
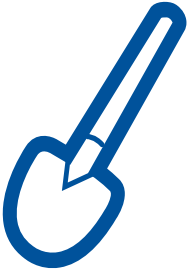




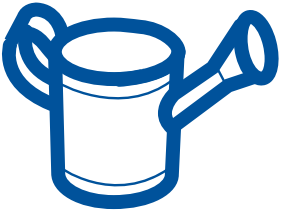
5



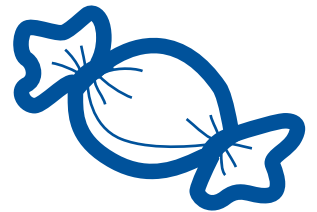
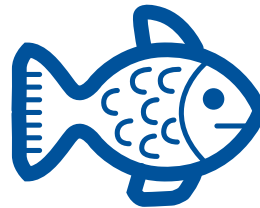
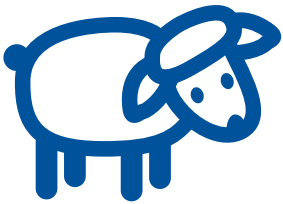
5



5



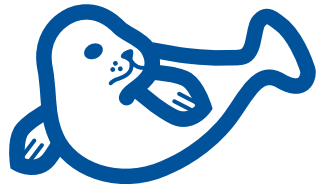
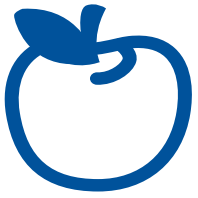
5



5



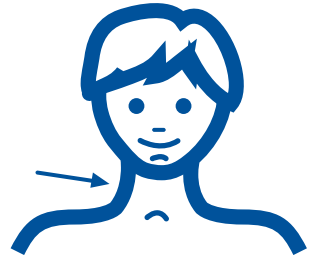
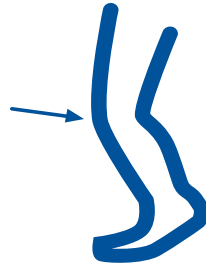
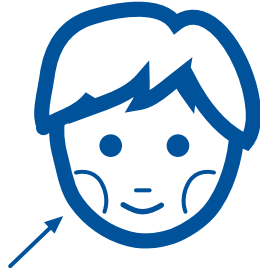
5



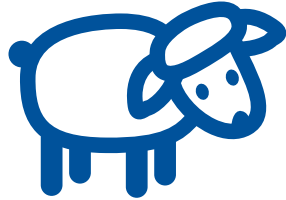
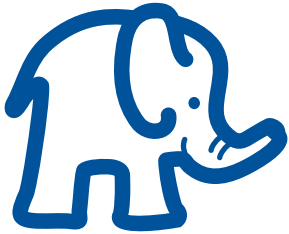
● 5



● 5



● 5



● 5

T U M A B  
P I R L O

1

A B O M T  
R P I U L

2

O T A R U  
L I M P B

3



T A R L B  
I M U P O

4

U R B O L  
I T P A M

5

B I R O T  
A L U M P

6





AB

AL

AM

AP

AR

AT

IB

IL

IM

IP

IR

IT

OB

OL

OM

OP

OR

OT

UB

UL

UM

UP

UR

UT

BA

LA

MA

PA

RA

TA

BU

LU

MU

PU

RU

ARI TOP TIR PUR LO RO TO

MUR BUT PLI OTA BO BI LI

MIR BOL MIL MAT TU MI PI

ARA BAL BAR PAR MAL RI TI

ALI AMI API TRI IRA MO PO

A

I

O

U

B

L

M

P

R

T

A

I

O

U

B

L

M

P

R

T

A

I

O

U

B

L

M

P

R

T